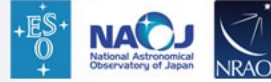




Atacama Large Millimeter/submillimeter Array  
In search of our Cosmic Origins



# Cycle 8 2021 Proposal Submission Statistics

Joint ALMA Observatory  
May 20, 2021



# Number of submitted proposals and time requested

	Number	Time requested (hours)		
		12-m	7-m	Total Power
All proposals	1735	26,325	14,846	13,802
ACA standalone	97	-	4023	2655
Large Programs	40	4357	3163	3794
25-50 h proposals on 12-m Array	198	6758	2532	2299
VLBI	22	264	-	-
Phased array (pulsar)	8	125	-	-

# Time requested on 12-m Array

	All	Chile	East Asia	Europe	North America	Other
Time requested (hours)	26,325	1308	5445	11,066	7668	838
Offered	4300	430	968	1451	1451	see note
Subscription	6.1	3.0	5.6	7.6	5.3	N/A

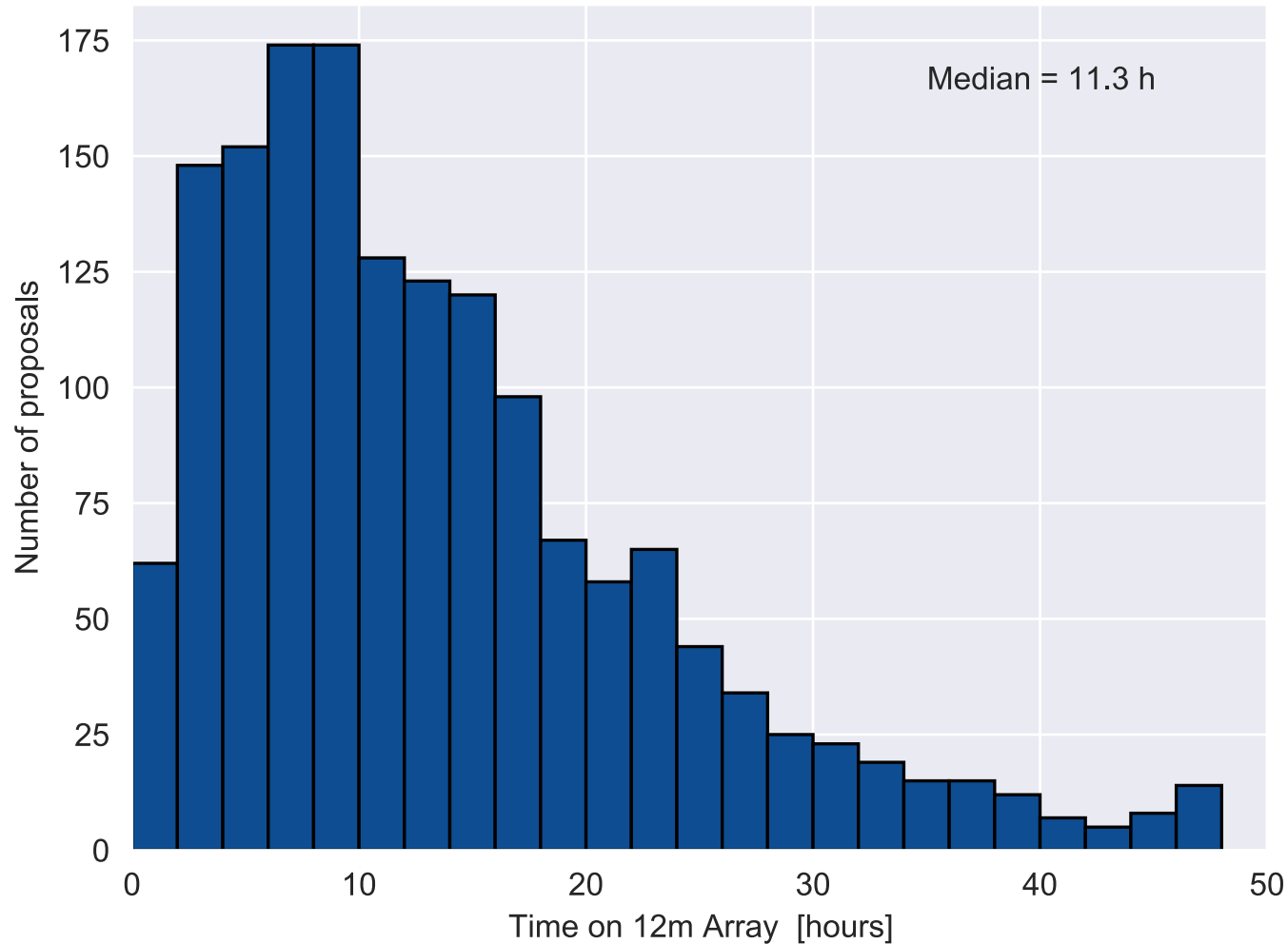
Note: All regions contribute observing time for proposals from PIs who are not affiliated with any of the ALMA regions.



# Time requested on 7-m and Total Power arrays

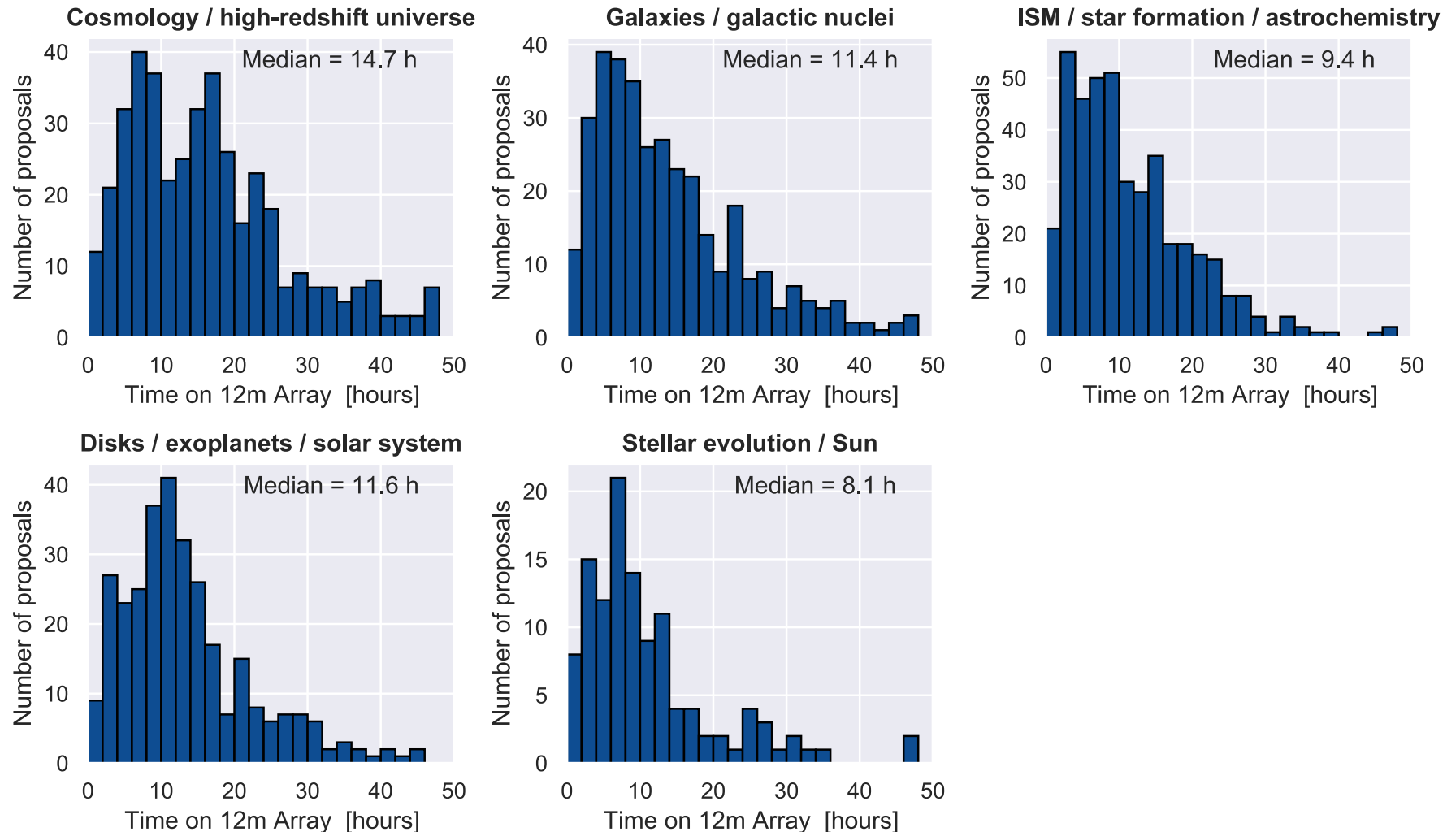
	All	Chile	East Asia	Europe	North America	Other
7-m Array (hours)	14,846	862	4542	4447	4602	394
Total Power Array (hours)	13,802	420	4537	3918	4822	106

# Requested 12-m Array Time per Proposal\*



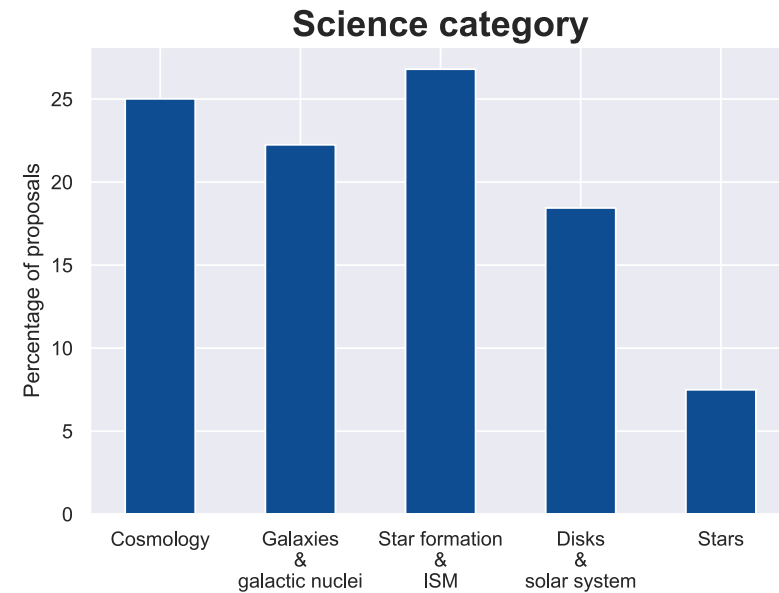
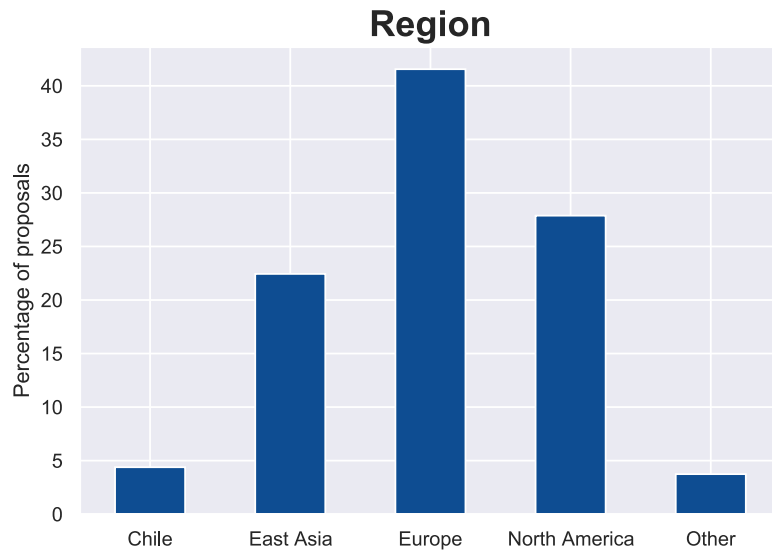
\*Excludes Large Programs

# Requested 12-m Array Time by category\*



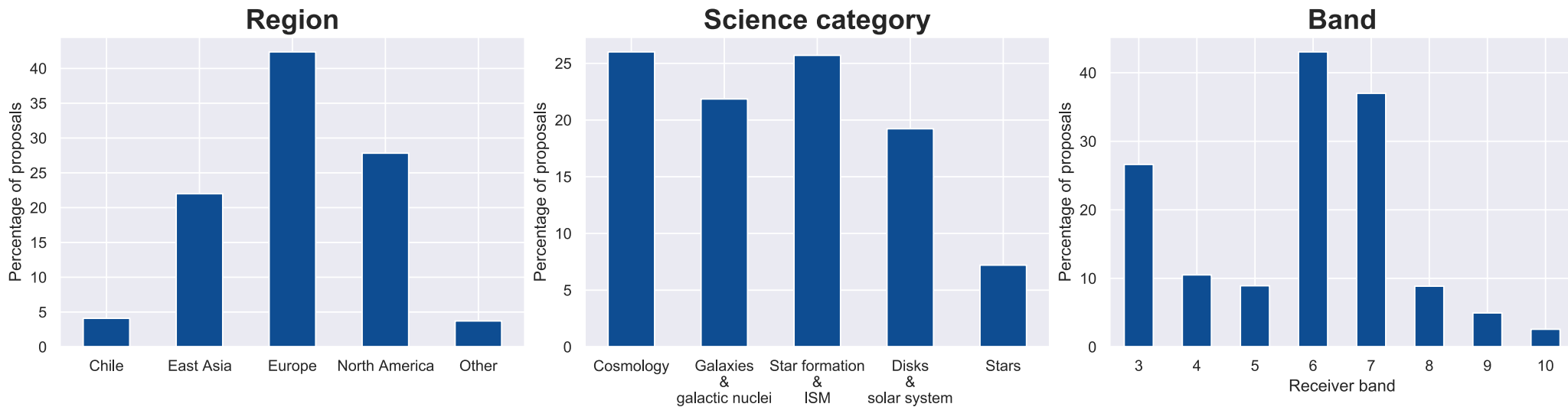
\*Excludes Large Programs

# Percentage of all proposals by region\* and category



\* Percentages by region correspond to the regional affiliation of the Principal Investigator (PI) and co-PIs.

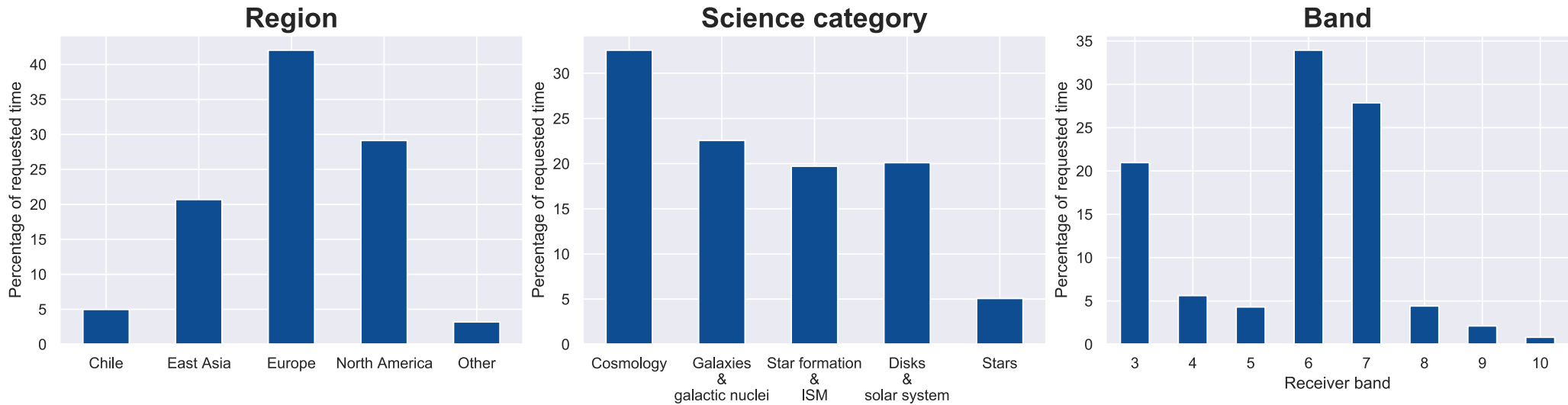
# Percentage of proposals requesting the 12-m Array by region, category, and band



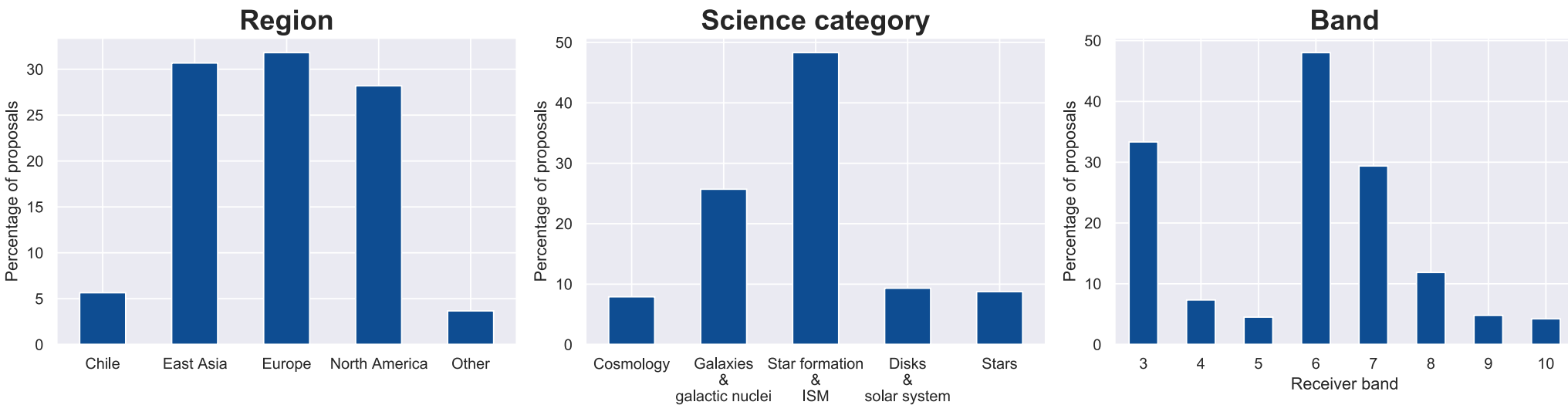
- Percentages based on 1638 proposals requesting the 12-m Array.
- The percentages by receiver band sum to greater than 100% since some proposals request more than one receiver band.



# Percentage of requested time on 12-m Array by region, category, and band



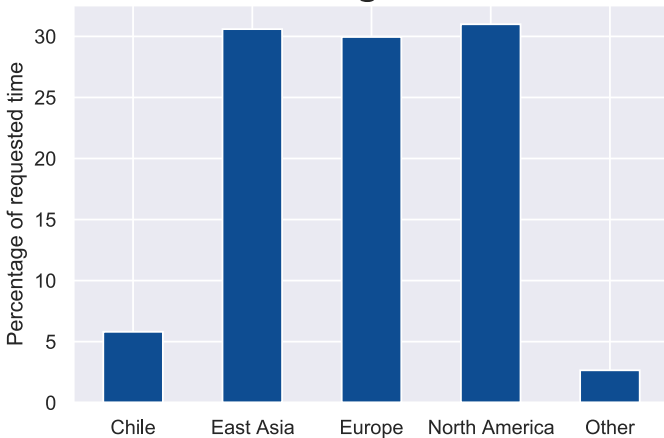
# Percentage of proposals requesting the 7-m Array by region, category, and band



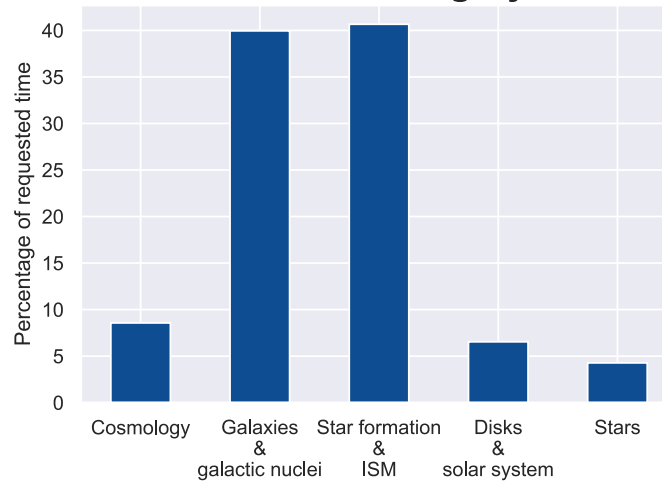
- Percentages based on 354 proposals requesting the 7-m Array.
- The percentages by receiver band sum to greater than 100% since some proposals request more than one band.

# Percentage of requested time on 7-m Array by region, category, and band

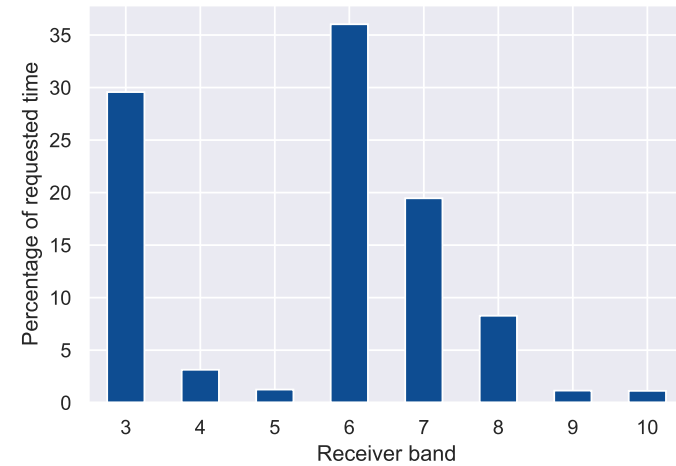
### Region



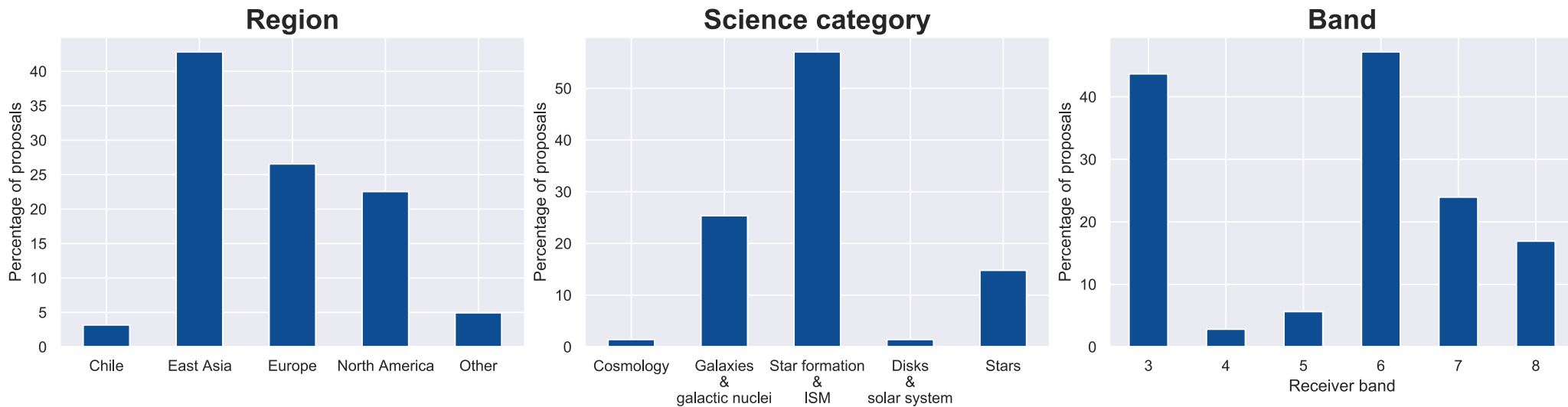
### Science category



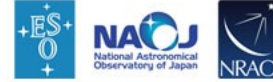
### Band



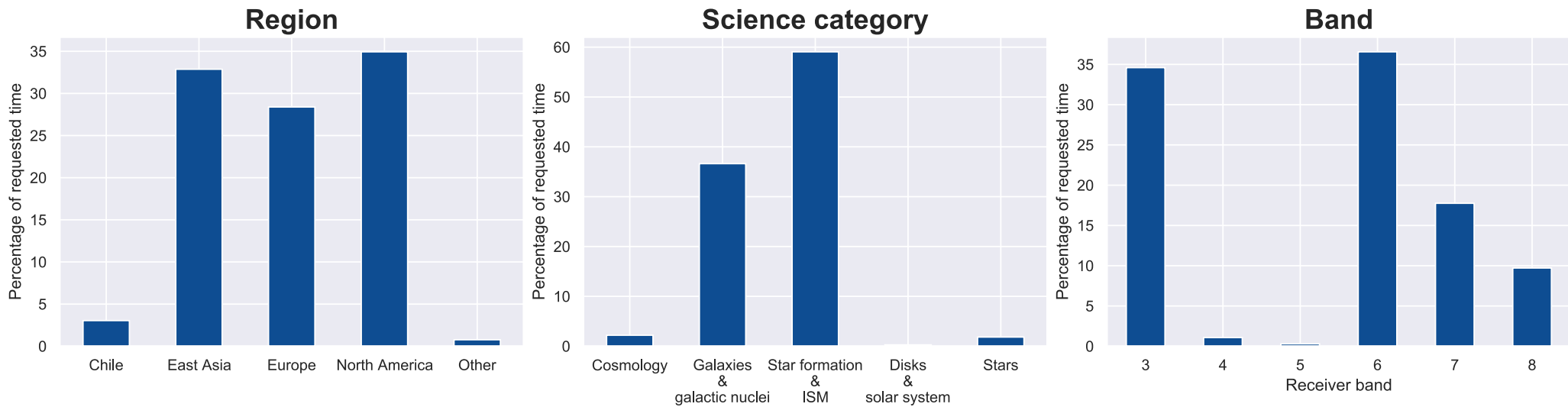
# Percentage of proposals requesting the Total Power Array by region, category, and band



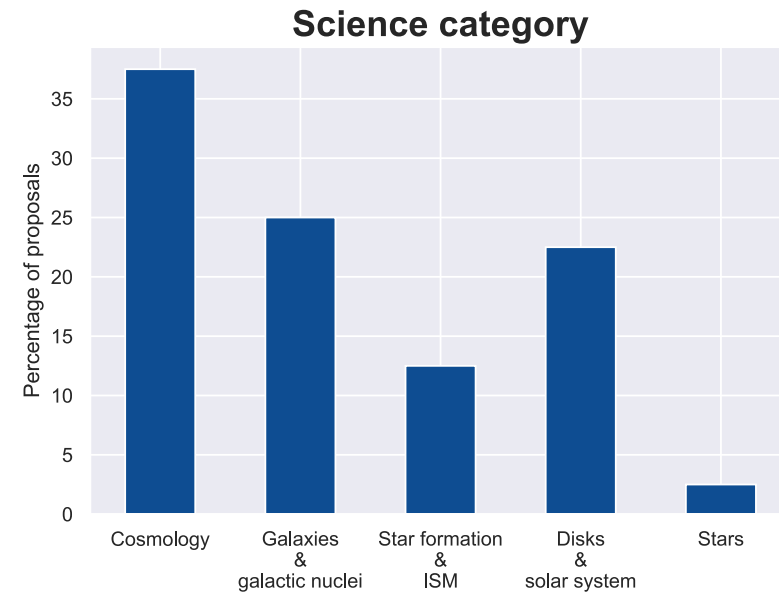
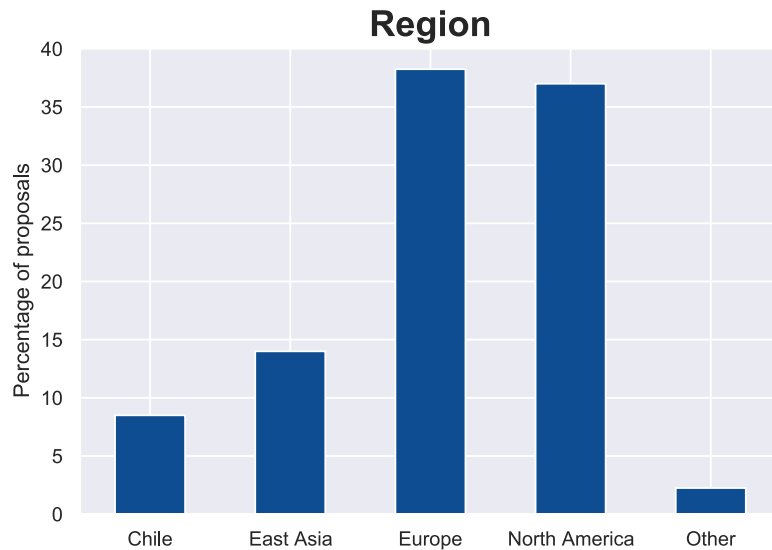
- Percentages based on 142 proposals requesting the Total Power Array.
- The percentages by receiver band sum to greater than 100% since some proposals request more than one receiver band.



# Percentage of requested time on Total Power Array by region, category, and band

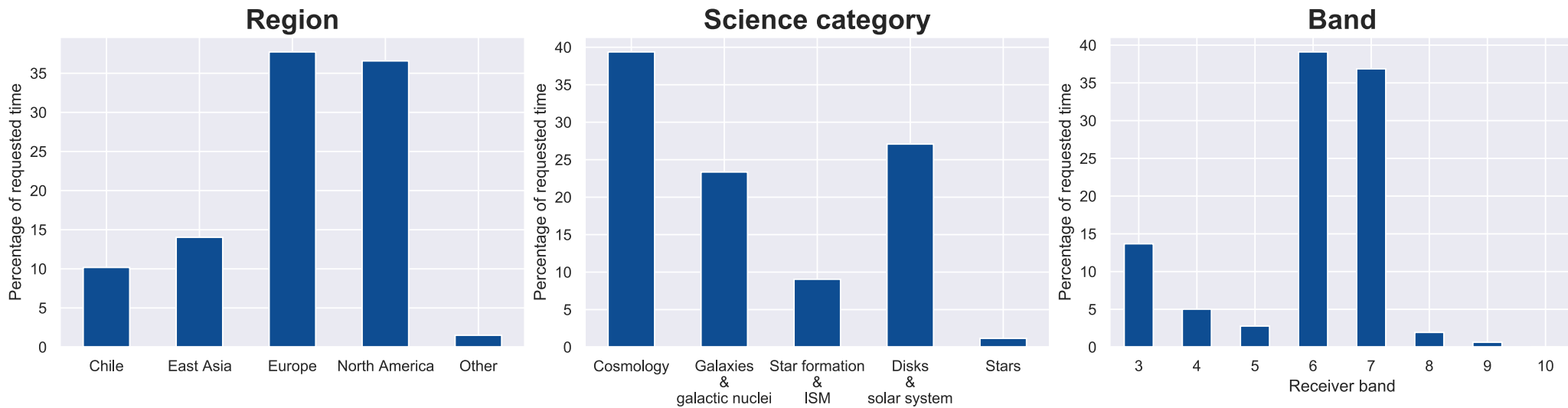


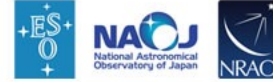
# Percentage of Large Programs by region\* and category



\* Percentages by region correspond to the regional affiliation of the Principal Investigator (PI) and co-PIs.

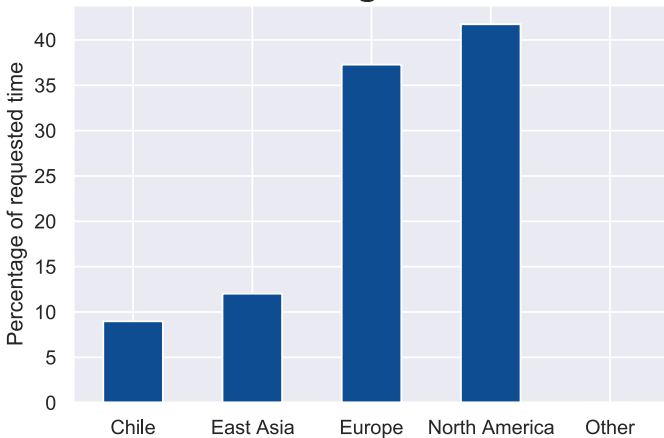
# Percentage of requested time on 12-m Array for Large Programs



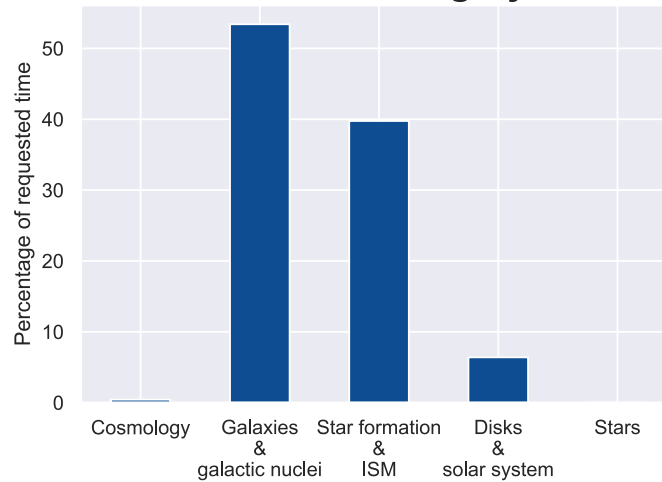


# Requested Time on 7-m Array for Large Programs

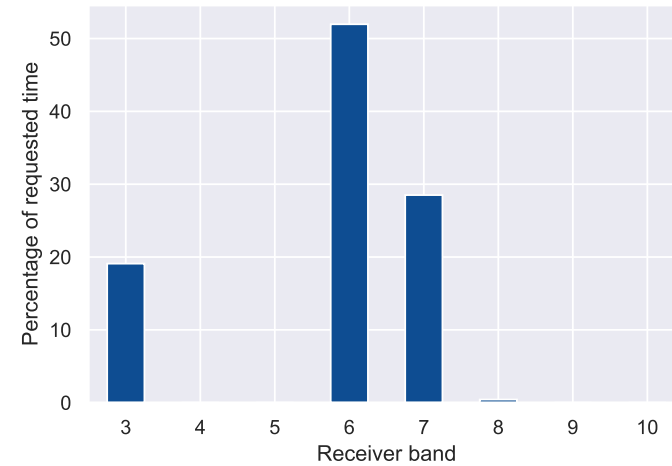
### Region



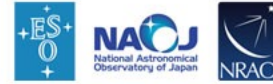
### Science category



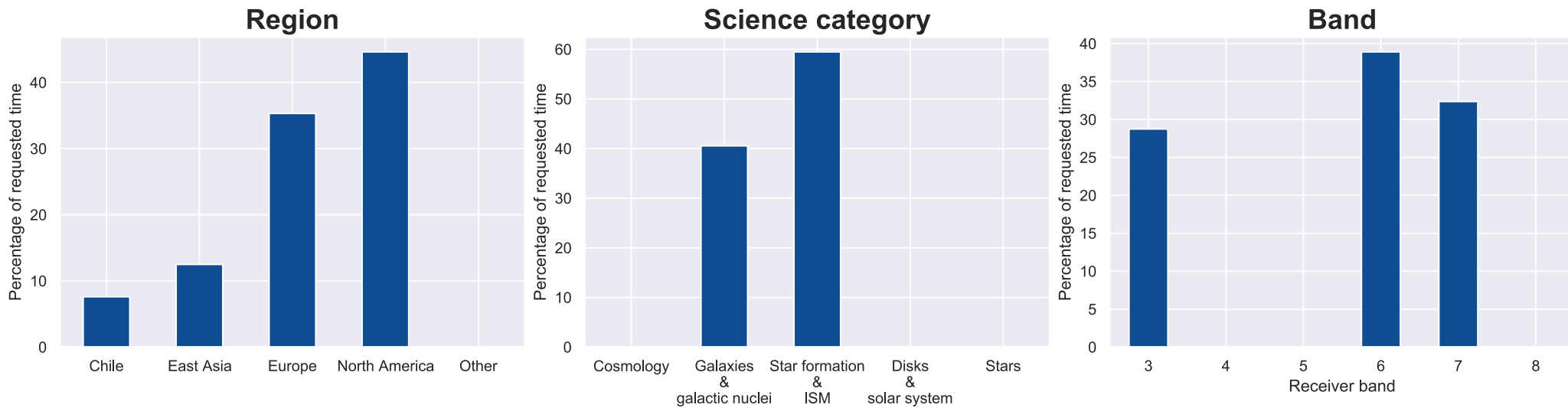
### Band



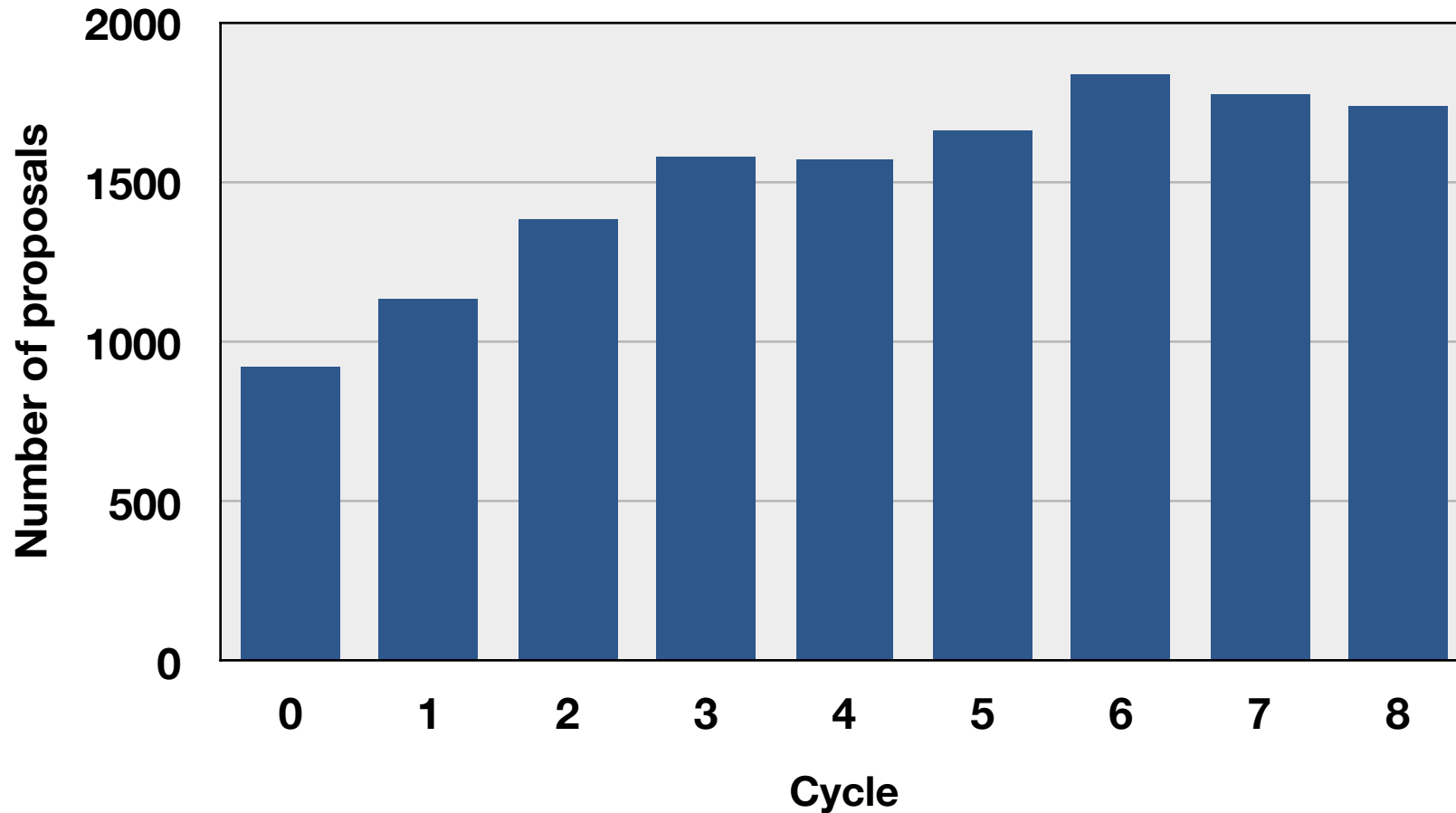




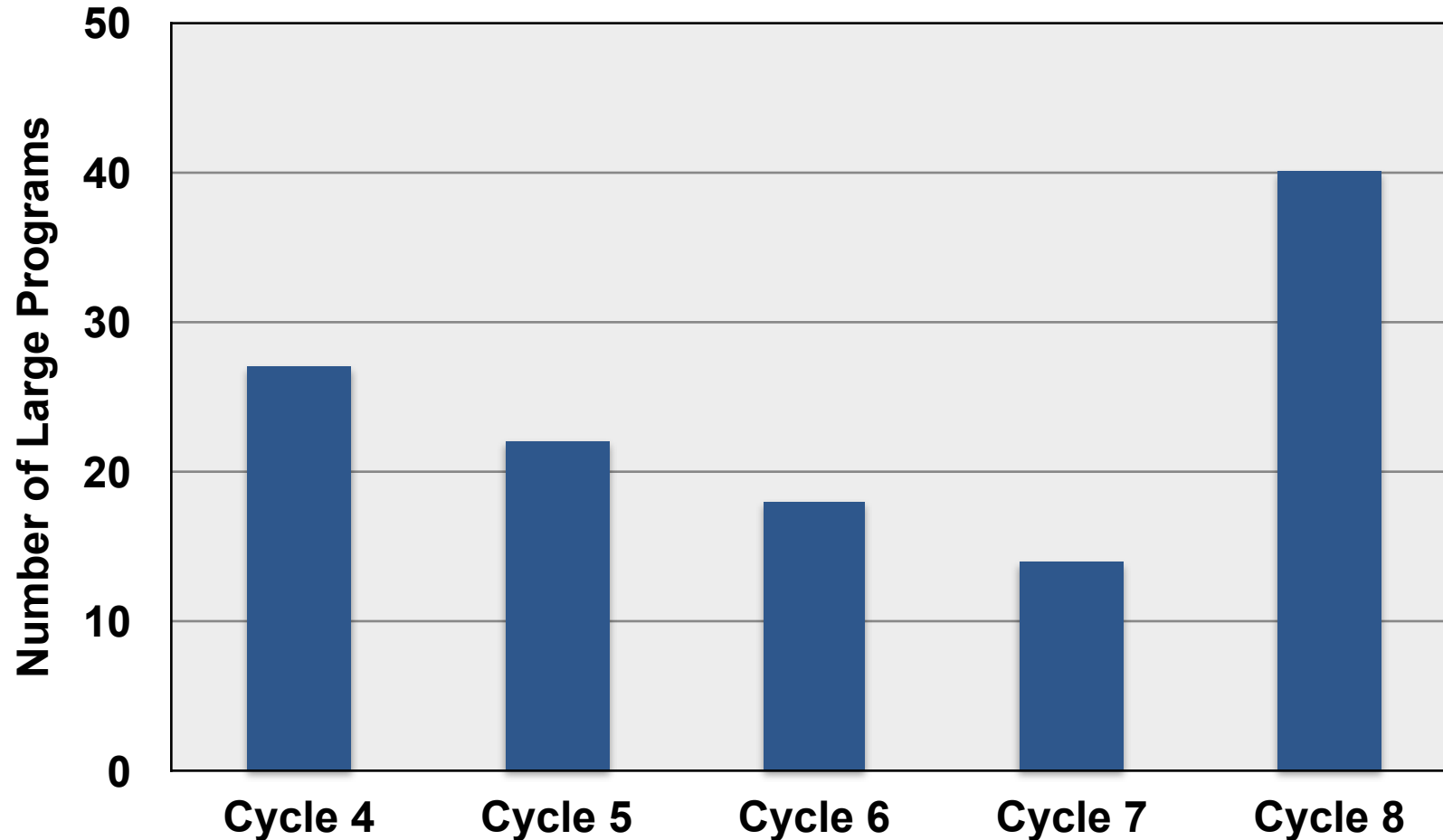
# Requested Time on Total Power Array for Large Programs



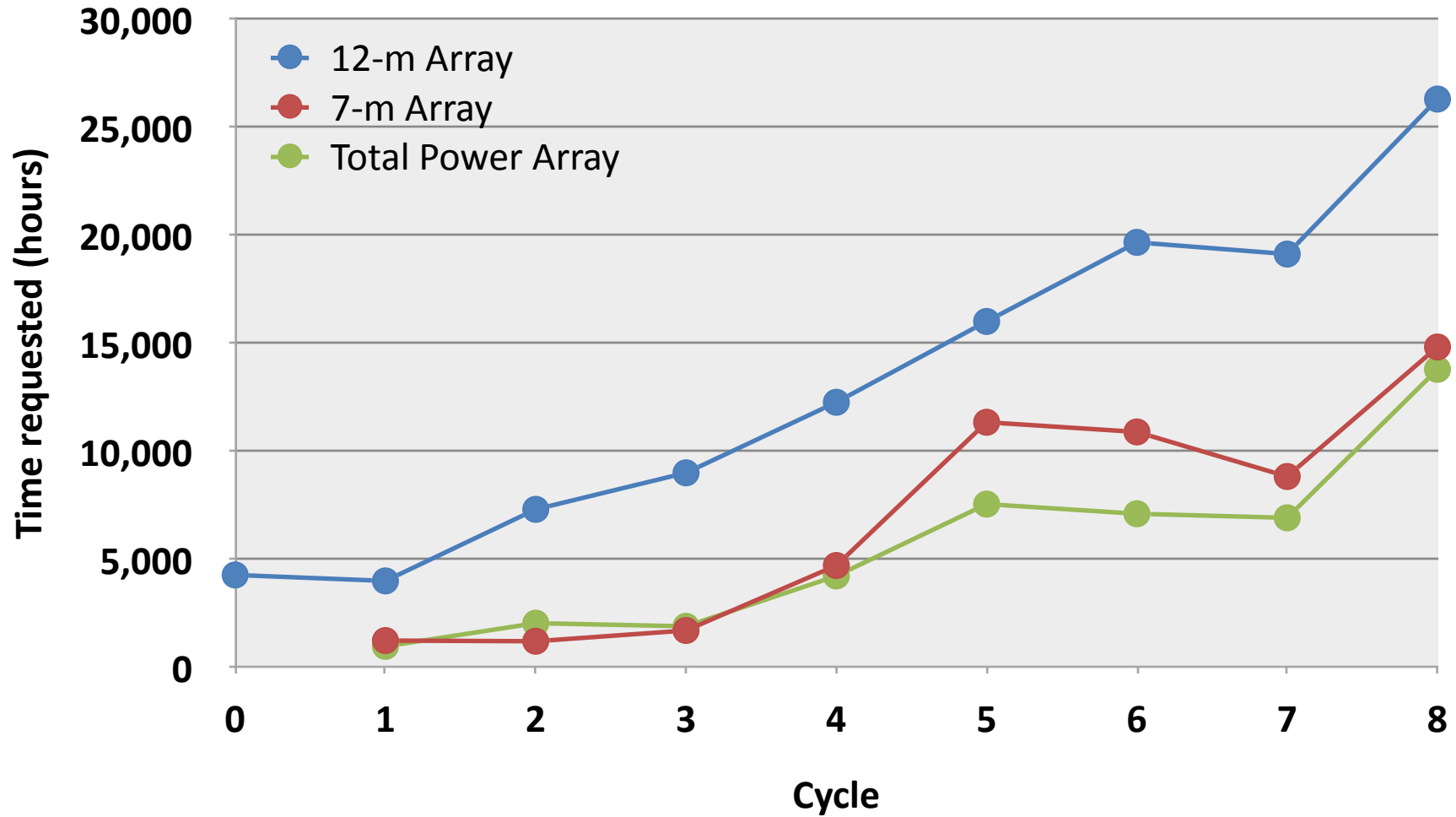
# Number of submitted proposals by Cycle



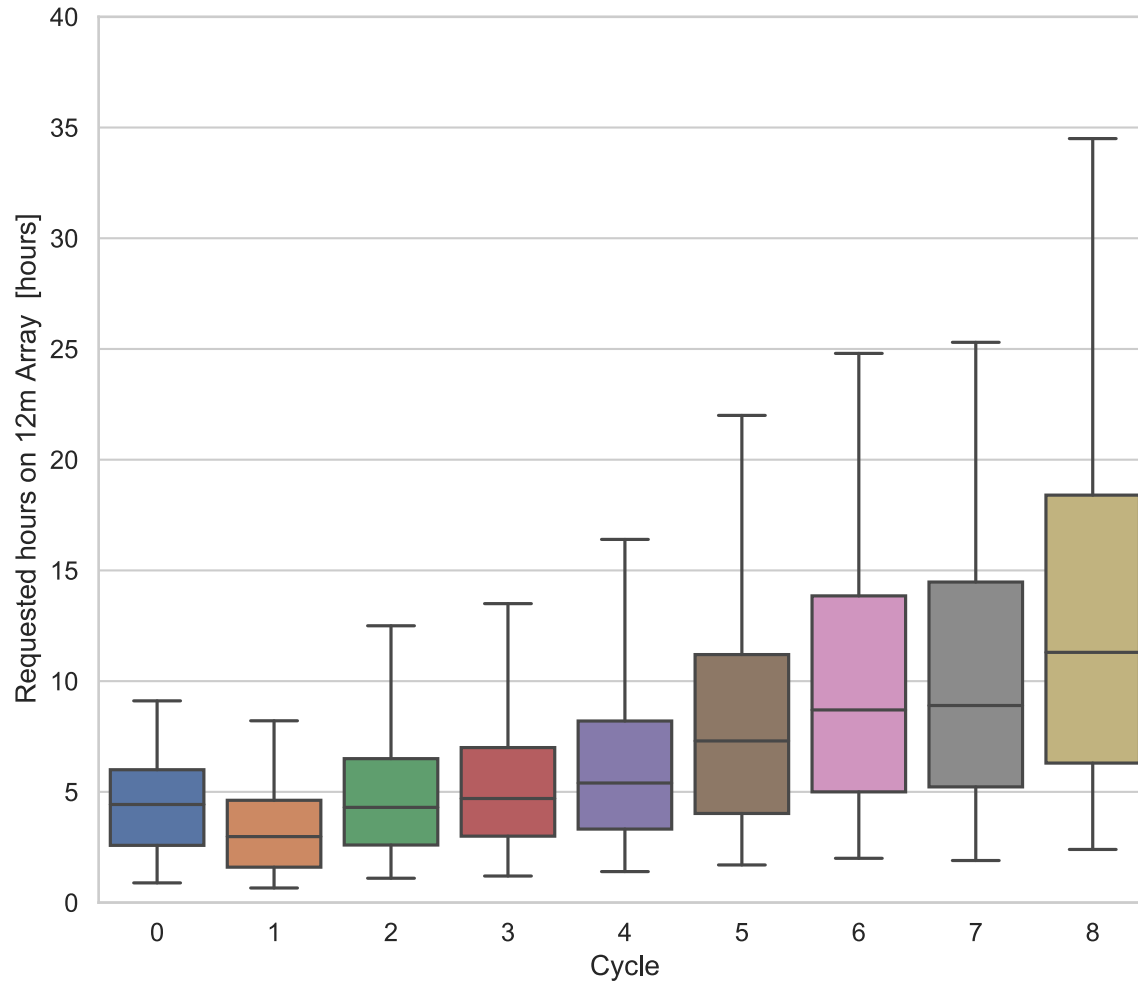
# Number of submitted Large Programs by Cycle



# Time requested by Cycle

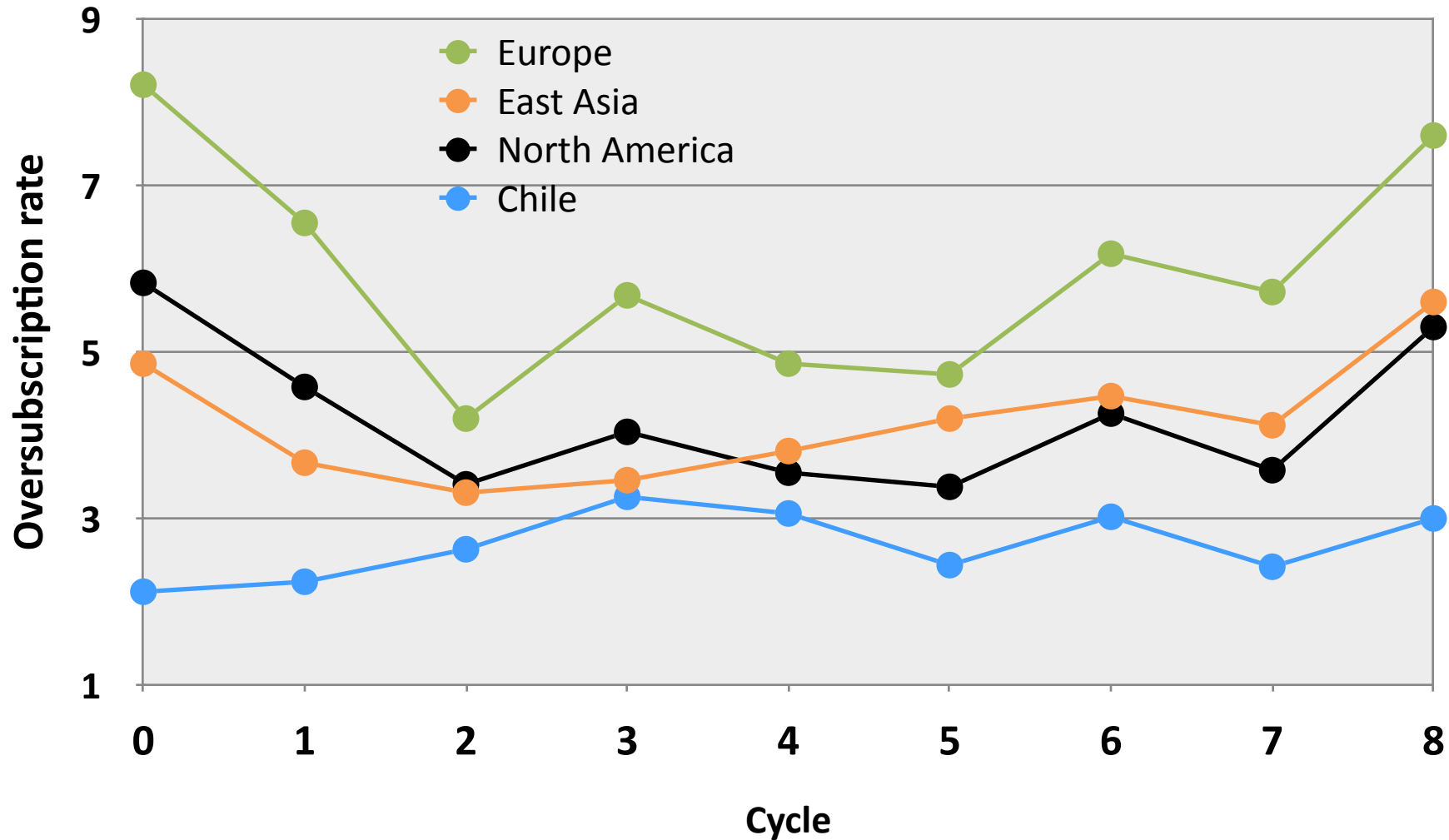


# Distribution of time requests on 12-m Array by Cycle



- Each box plot shows:
  - median (horizontal line)
  - 25-75% distribution (box)
  - 5-95% distribution (whiskers)
- Large Programs and standalone ACA proposals are excluded.

# Oversubscription rate by cycle: 12-m Array



# Number of new Principal Investigators

